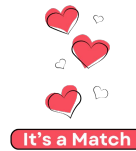
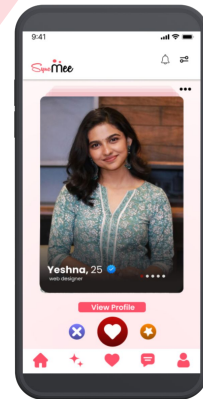
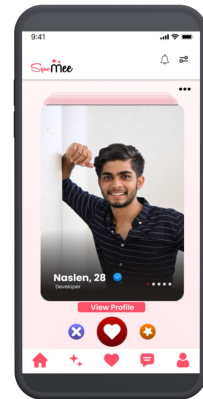


Syncmee



It's a Match



Overview

Discover a dating experience like no other with SyncMee, a platform designed to connect people authentically, simply, and securely. SyncMee is more than just a dating app – it's a platform where real connections flourish. With its intuitive interface, advanced features, and commitment to safety, SyncMee offers users an enjoyable and secure way to meet like-minded individuals. Whether you're seeking meaningful friendships, long-term relationships, or just want to meet new people, SyncMee provides the tools and features to help you find exactly what you're looking for. With a focus on user safety, detailed profiles, and interactive engagement, SyncMee makes meeting new people both safe and delightful.



Register as a User



Quick Sign-Up Options: Start your SyncMee journey by entering your mobile number for a secure sign-up. You'll receive an OTP via SMS to verify your identity.

Complete Profile Verification: Next, fill in your full name, email, location, date of birth, and gender to create a verified profile. This builds trust within the community.

Finish Profile Setup: Personalize your profile with a catchy bio, interests, and photos that reflect who you are. A complete profile helps you connect with others effectively!

Setting Up Your Profile

Essential Profile Details: Include basic information like your name, age, location, occupation, and interests. This makes it easy for others to get to know you at a glance.

Personalized Bio: Express yourself through an open bio, allowing you to share more about your personality and what you're looking for in a connection.

Photo Gallery: Upload multiple photos, complete with captions and control over visibility, to showcase your best self.

Interest & Hobby Tags: Select from a range of interests to highlight your hobbies and passions, helping you find common ground with potential matches.

Badges & Highlights: Personalize your profile with fun badges like "Frequent Traveler" or "Foodie" to make your profile stand out and convey your lifestyle.

Travel

Coffee

Dance

Books

Food

Movies

Sports

Shopping

Gym

Politics


Matching Features



Music



Travel



Sports

Smart Matching Algorithm: Enjoy matches tailored to your preferences, location, and interests, ensuring you meet people who align with what you're looking for.

Advanced Filters: Refine your search with filters such as education level, lifestyle, religion, height, and more, enabling you to find individuals who share your values and lifestyle.

Daily Matches: Receive a curated selection of daily matches based on your profile, keeping the experience fresh and exciting.

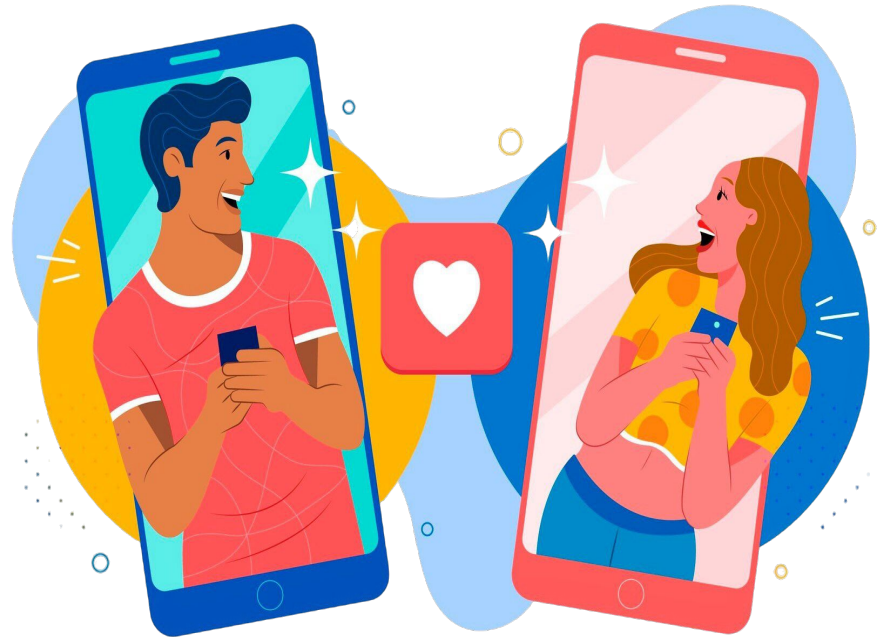
Swipe or Scroll Interface: Easily browse profiles with a swipe or scroll, making the experience intuitive and fun.

Engage & Communicate on SyncMee

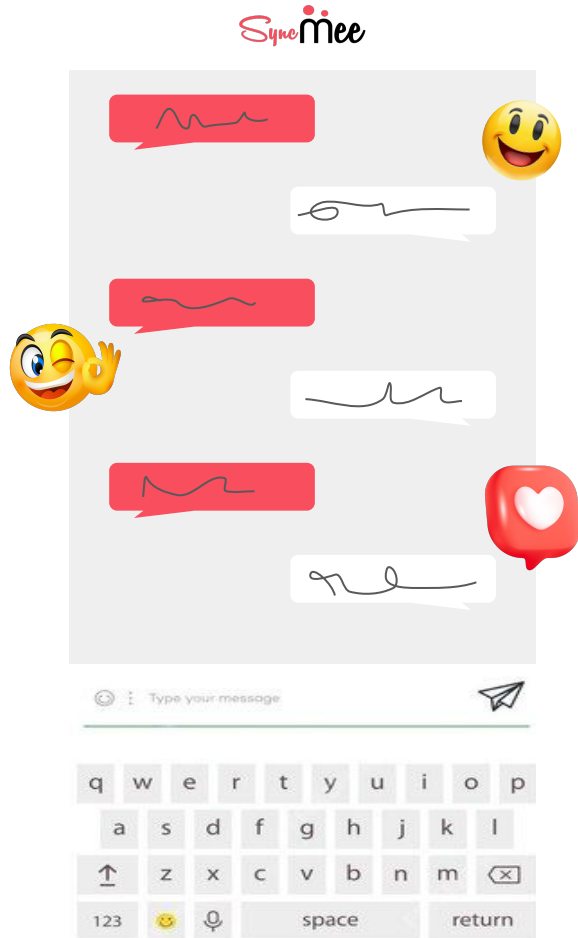
Explore Mode: Broaden your horizons by browsing beyond your preferences and location, giving you the freedom to discover new people and expand your social circle.

Nearby Feature: Discover people nearby who may have overlapping interests for convenient, local connections.

Boosted Profiles: Opt for a boost to make your profile stand out, increasing visibility and connection opportunities during peak hours.



Messaging & Communication



Instant Messaging: Start conversations with those you've matched with and engage in meaningful dialogues without restrictions.

Icebreakers & Prompts: Choose from pre-set questions to kickstart conversations, making it easier to break the ice with someone new.

Read Receipts: Know when your message has been read, adding clarity and flow to your conversations.

Message Filtering: Organize your chats by unread, favorite, or active conversations, helping you stay in control of your interactions.

Prioritizing Safety & Privacy

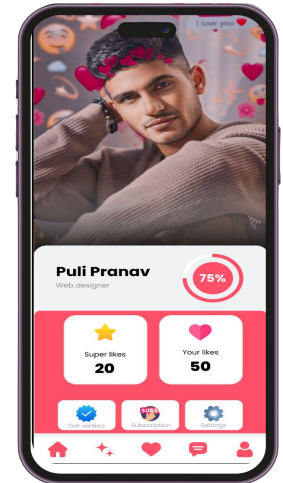
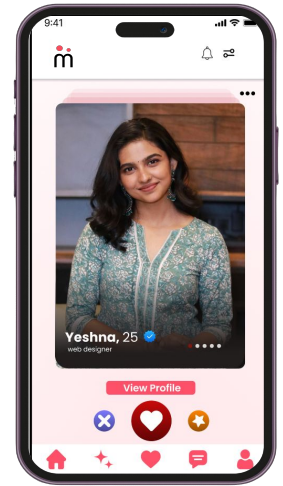
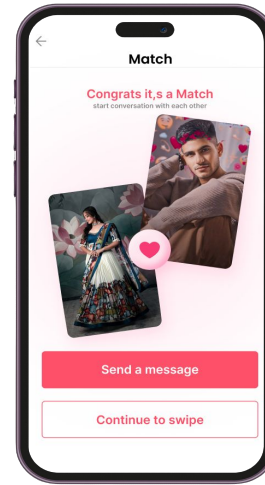
Profile Verification: All profiles undergo a verification process to maintain the quality and security of user interactions.

Location Privacy: Toggle location privacy settings to show a general location or hide it completely, depending on your comfort.

Visibility Controls: Control your profile visibility to avoid unwanted attention, including an invisible mode.

Report & Block Features: Block or report any users displaying inappropriate behavior to keep your experience safe.

Encrypted Messaging: Your conversations are protected by end-to-end encryption, ensuring data privacy and confidentiality.



Elevate Your Experience with SyncMee Premium



Premium Features & In-App Purchases

Premium Membership: Gain access to advanced features such as unlimited swipes, enhanced filters, read receipts, and more.

Boost & Spotlight Options: Increase your profile visibility with temporary boosts and spotlights, helping you reach a larger audience.

Flexible Subscription Plans: Choose from weekly, monthly, quarterly, or yearly plans for a premium experience that suits your lifestyle.

Follow us on



Thank you



#209, 2nd Floor, Hive Space, Whitefield Road,
Kondapur, Hyderabad, Telangana -500084.



+91 970 193 0011



+1 934 221 7261



+971 55 316 6156



support@syncmee.com



www.syncmee.com